

GeoHive data hub

Reporting platform for Ireland's SDGs

Lorraine McNerney, Ordnance Survey Ireland

UN-GGIM: Geospatial Information for Sustainable Development

7th August 2019



Rialtas na hÉireann
Government of Ireland

Presentation Overview



Rialtas na hÉireann
Government of Ireland

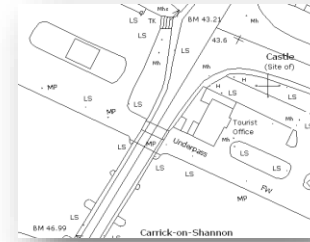
1. The role of Geospatial in Ireland.
2. Partnership for Agenda 2030 – an Irish perspective.
3. Ireland's SDG Data Hub.

National Mapping Agency



- › Established in 1824, HQ in Dublin
- › Mandated by Government to create, maintain and provide the definitive national mapping, related geographic records and services for the State
- › Under the Department of Housing, Planning and Local Government
- › 230 staff; merging with Property Registration Authority and the Valuation Office to form a new body called Tailte Éireann

Local Mapping



Regional Mapping



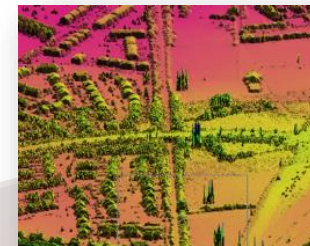
National Mapping



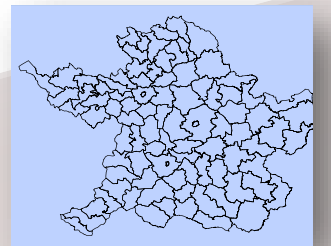
National Imagery



Height Data



Boundary Data

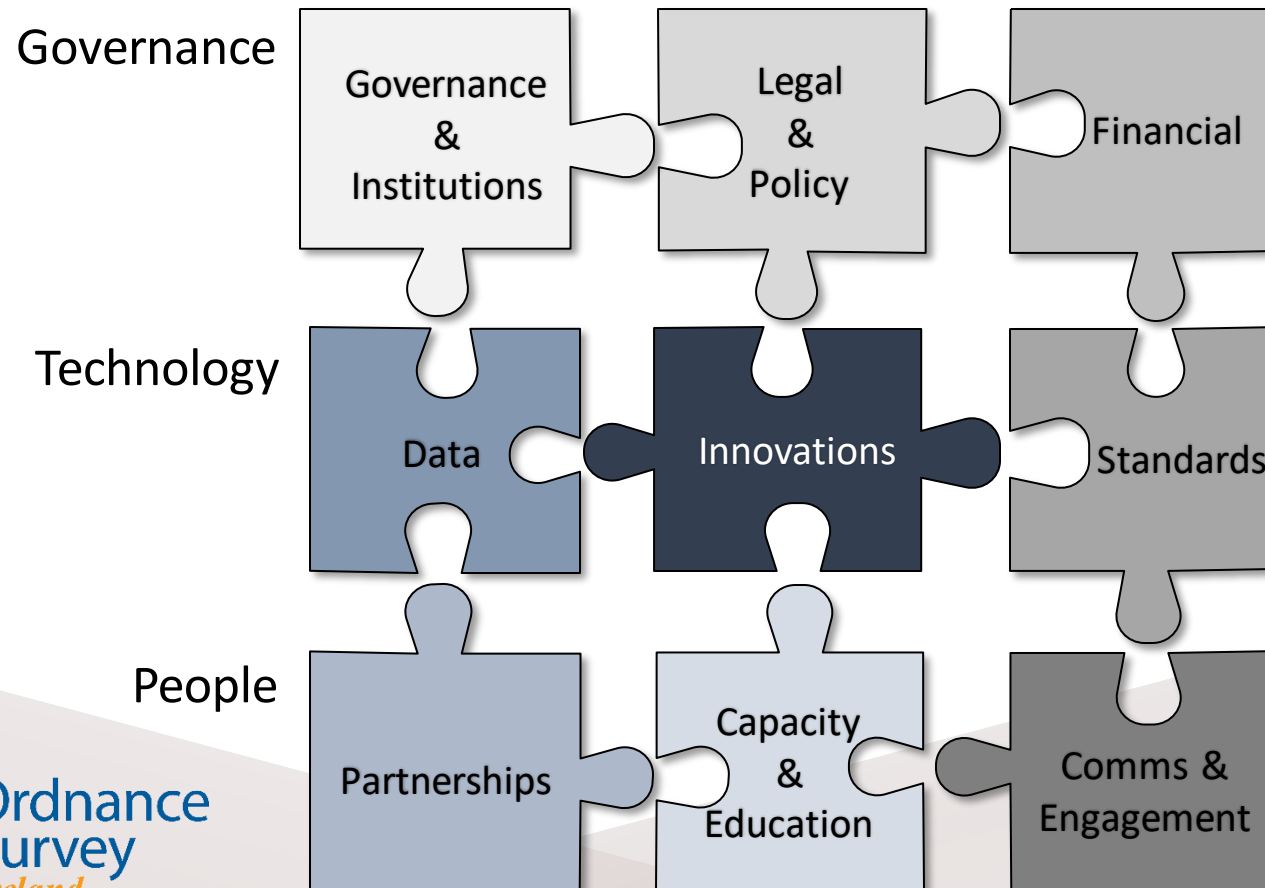


Aligning national strategy with global frameworks



UN-GGIM

OSi adopted UN IGIF for our Statement of Strategy 2019 - 2021

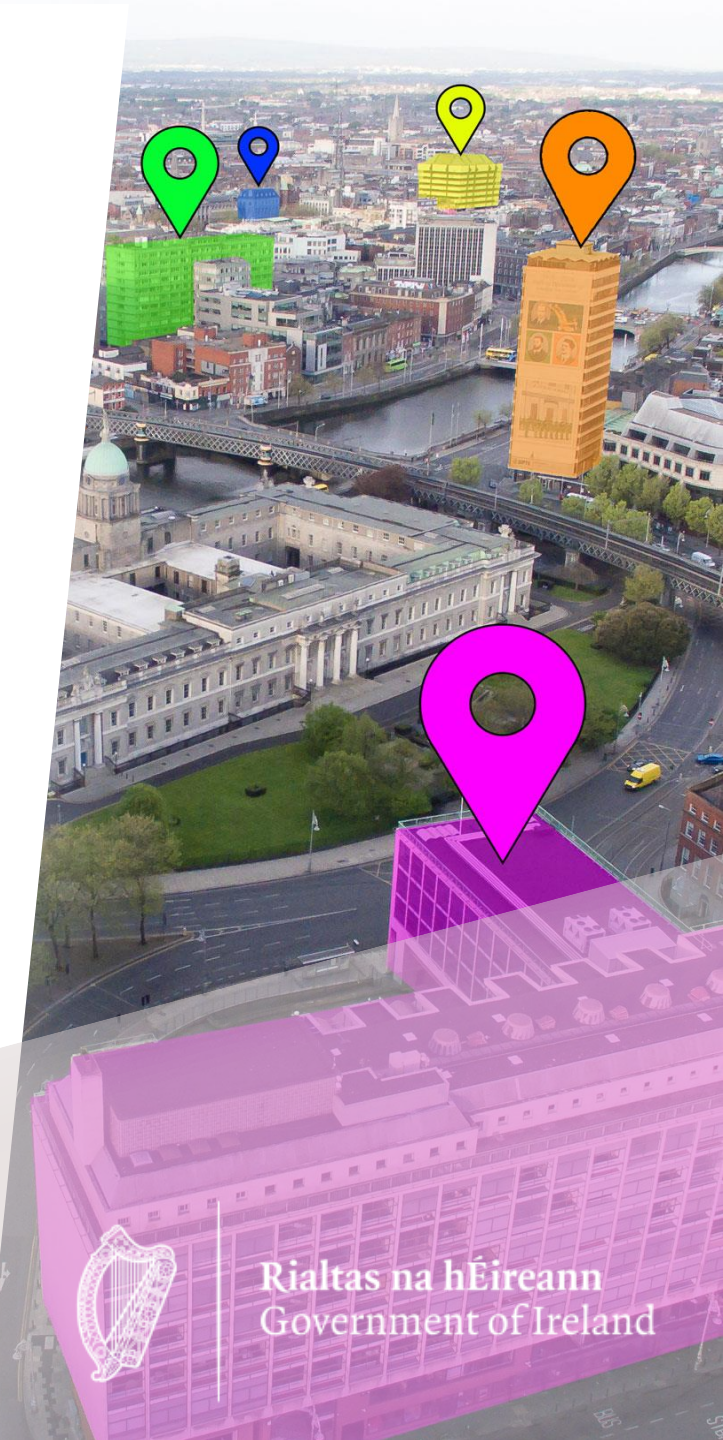


Modelling the real world

OSi have developed a national geospatial reference data



- › Created a **single source** of national geographic truth (scale-independent)
- › **Core data themes** with maintained object life-cycles and history
- › Over 50 million **uniquely referenced objects** (Unique Geographic Identifier - UGI)



National data infrastructure

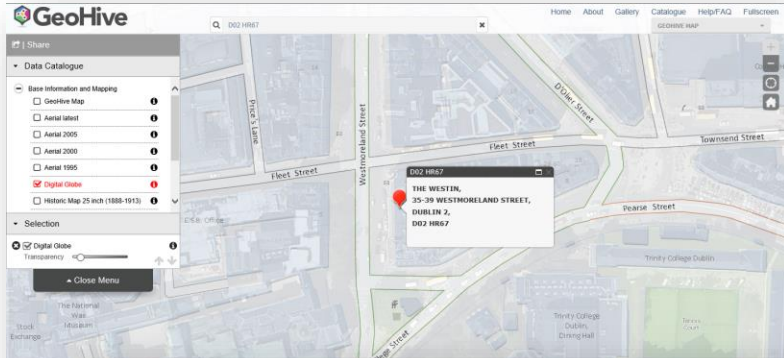


Rialtas na hÉireann
Government of Ireland

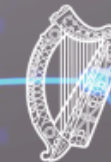
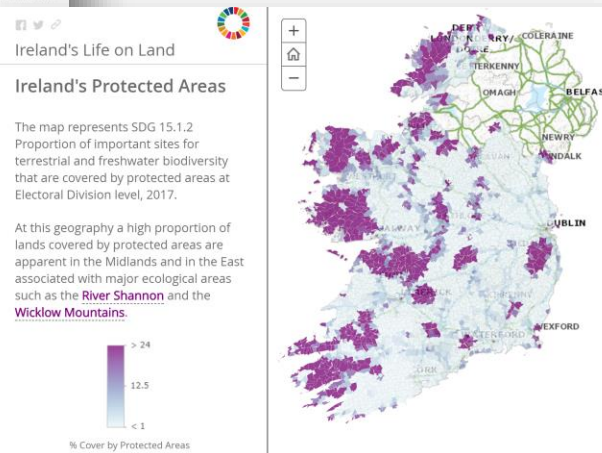
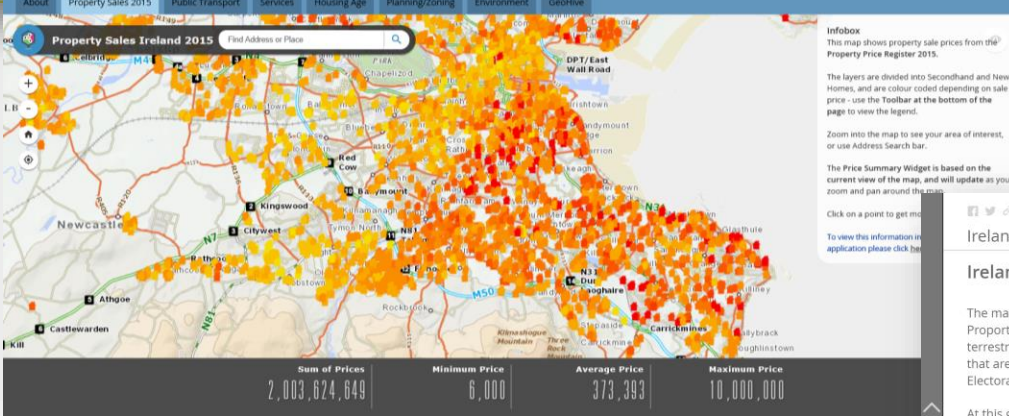
OSi have developed GeoHive as the State's geospatial data hub on behalf of Government



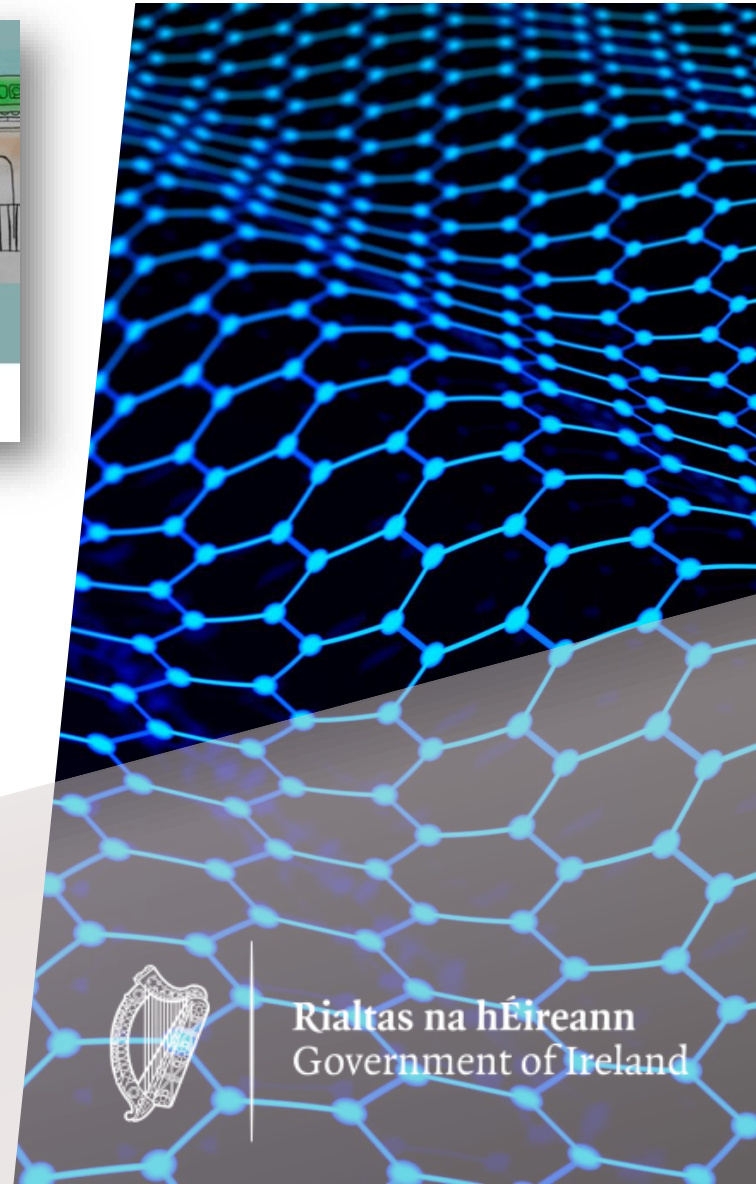
Smarter use of societal data



Buying Property in Ireland



Rialtas na hÉireann
Government of Ireland





Rialtas na hÉireann
Government of Ireland

Geospatial role in Ireland's 2030 Agenda

Partnership for Agenda 2030 commitments



Rialtas na hÉireann
Government of Ireland

SDG Policy and Stakeholder Co-ordination



Roinn Cumarsáide, Gníomhaithe
ar son na hAeráide & Comhshaoil
Department of Communications,
Climate Action & Environment

Geospatial Data and GeoHive Platform



Statistics and Data Governance



Geo-statistical collaboration in Ireland



Rialtas na hÉireann
Government of Ireland



- Ireland's National Mapping Agency
- Ordnance Survey Ireland Act, 2001
- National delegate at the United Nations Global Geospatial Information Management

Mandate: *"To provide a national mapping service in the State... creating and maintaining the definitive national mapping and related geographic records"*



- Ireland's National Statistical Office
- Statistics Act, 1993
- National delegate at the United Nations Statistical Division

Mandate: *"The collection, compilation, extraction and dissemination for statistical purposes of information relating to economic, social and general activities and conditions in the State"*

UN SDG Data Hub Research Initiative



Rialtas na hÉireann
Government of Ireland

17 Goals to Transform our World

Governments, businesses and civil society together with the United Nations (UN) have started to mobilise efforts to achieve the Sustainable Development Agenda by 2030. Universal, inclusive and indivisible, the Agenda calls for action by all countries to improve the lives of people everywhere.

Ireland's [Sustainable Development Goals National Implementation Plan 2018-2020](#) provides a whole-of-government approach to implement the 17 Sustainable Development Goals (SDGs).

This is Ireland's public platform for exploring, downloading and combining publicly available data relating to the UN and the European Union (EU) Sustainable Development Goals. Ireland's progress against each Goal is measured using a set of globally and EU agreed indicators and here you can search for, discover and visualise the data we use to create these indicators.



<http://irelandsdg.geohive.ie/>

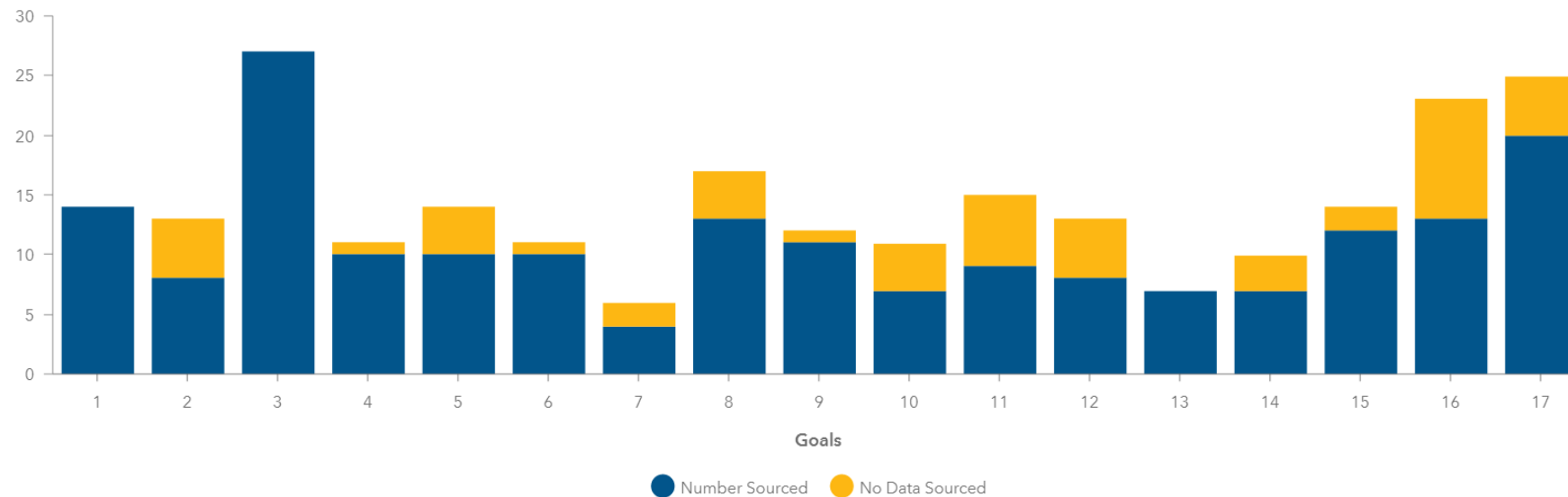


SDG indicators sourced



Rialtas na hÉireann
Government of Ireland

- To date, Ireland have sourced 86% of the SDG Indicators
- Indicators regularly added to the platform to show how Ireland is continuing to evidence its achievements in the months and years ahead



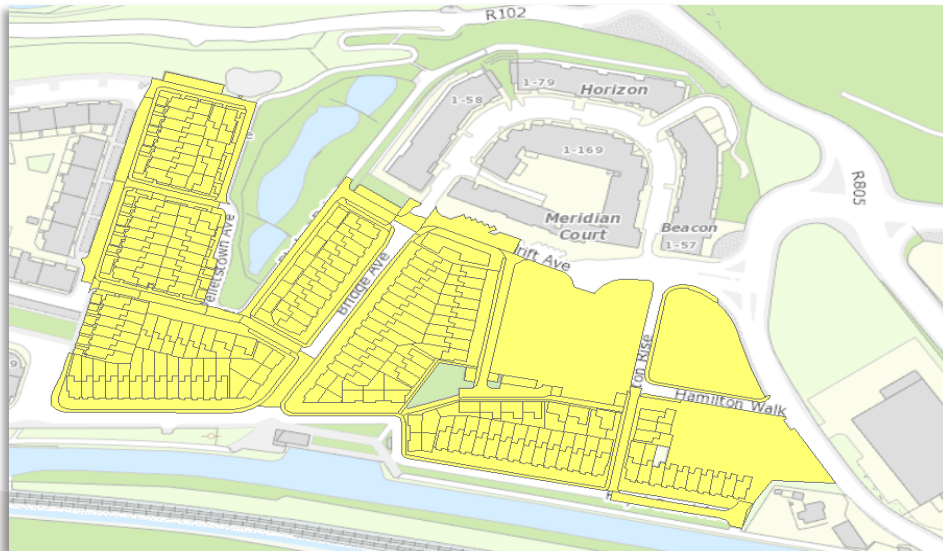
Develop national geostatistical information



Rialtas na hÉireann
Government of Ireland

New indicators and stats created from OSi, CSO and other sources

*Ratio of land consumption rate to
population growth rate*



National land cover

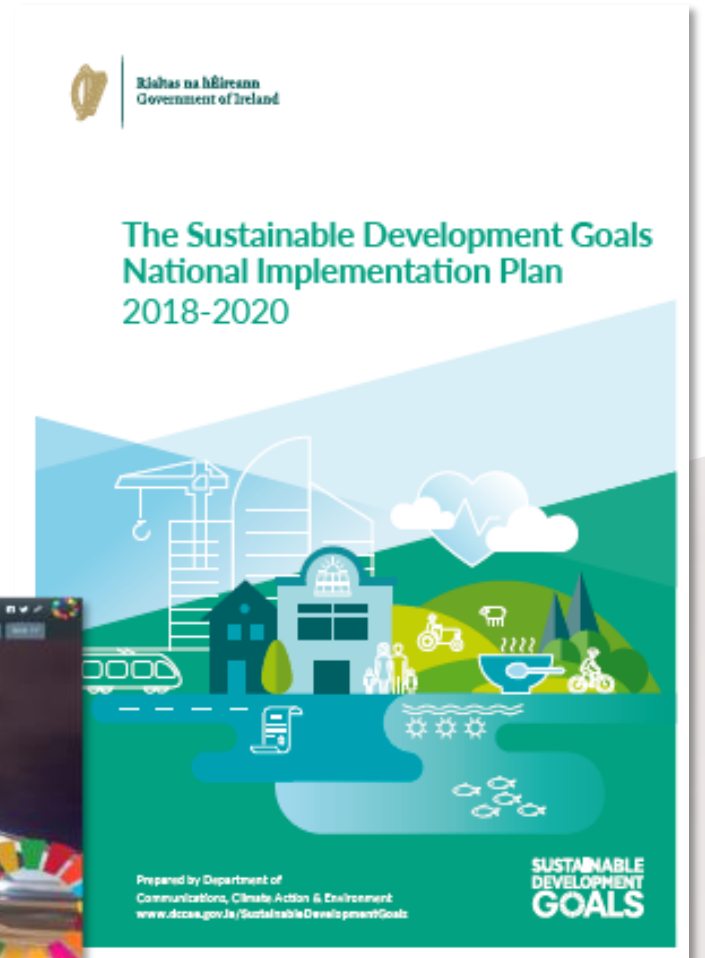


SDG Data Governance & Policy



Rialtas na hÉireann
Government of Ireland

- OSi/CSO/Esri Ireland **Data Governance Team**; meets weekly
- National UN SDG Indicators **Data Governance Board** comprising stakeholders from Government and Agencies; meets quarterly
- UN SDG Civil Service **Senior Officials Group**, chaired by Department of Communication, Climate Action & Environment (DCCAEC); CSO and OSi are invited members



Integration of wider communities



Rialtas na hÉireann
Government of Ireland



Engagement and Communication



Rialtas na hÉireann
Government of Ireland

Working with Stakeholders to:

- Identify authoritative data
- Provide evidence of progress
- Drive progress



17 PARTNERSHIPS
FOR THE GOALS





Rialtas na hÉireann
Government of Ireland

irelandsdg.geohive.ie

Ireland's SDG Data Hub



Rialtas na hÉireann
Government of Ireland

17 Goals to Transform our World

Highlighting Ireland's progress towards achieving the United Nations Sustainable Development Goals



<http://irelandsdg.geohive.ie/>

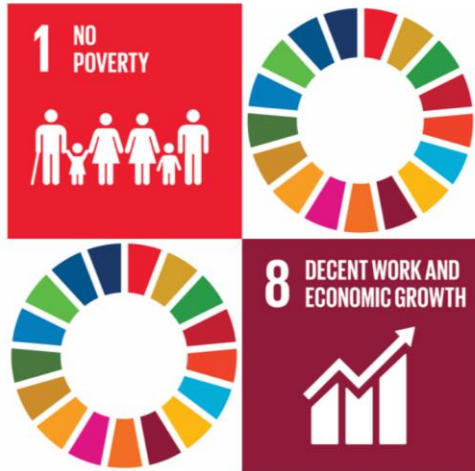


<https://storymaps.arcgis.com/stories/1f89826f0eef46f9a35e26db88261734>

Ireland's Story Maps



Rialtas na hÉireann
Government of Ireland

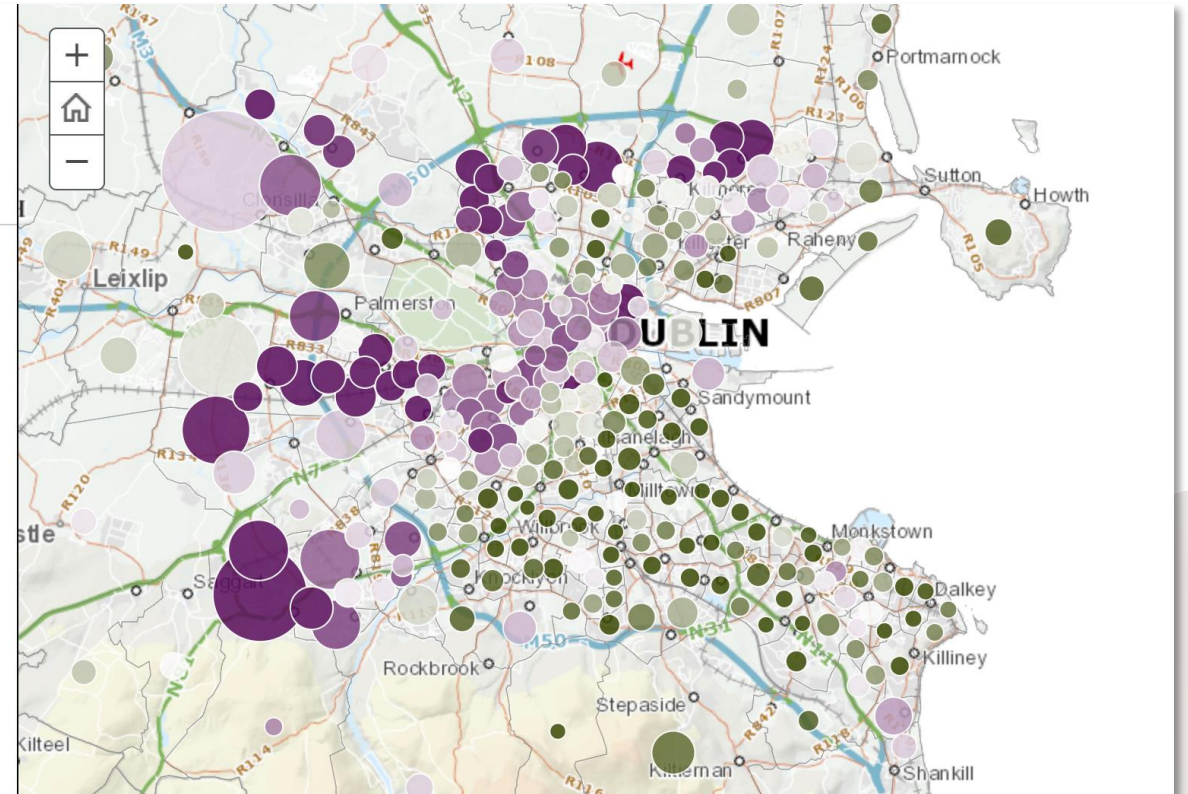


The Changing Patterns of Unemployment and Poverty in Ireland, 2011-2017

A focus on cities

The map displays unemployment rate and total unemployed population from the Census 2016 at ED level. A closer look at Dublin illustrates that varying unemployment rates within the area.

Data at this level provide a detailed representation of unemployment trends. This visualisation highlights the divide (North East, South West divide) in high and low levels of unemployment.



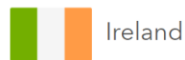
UN SDG Data Hub



Rialtas na hÉireann
Government of Ireland



Featured Open Data Sites by Country



Ireland



Philippines



Mexico



State of Palestine



United Arab Emirates

A Partnership for Success
Geospatial & Statistical Collaboration in Ireland

A Partnership for Success
A partnership between the Central Statistics Office and Ordnance Survey Ireland has been established to enhance public sector data. This Story Map explores the collaboration and ongoing projects.

Open



Thank You

<https://storymaps.arcgis.com/stories/1f89826f0eef46f9a35e26db88261734>

